

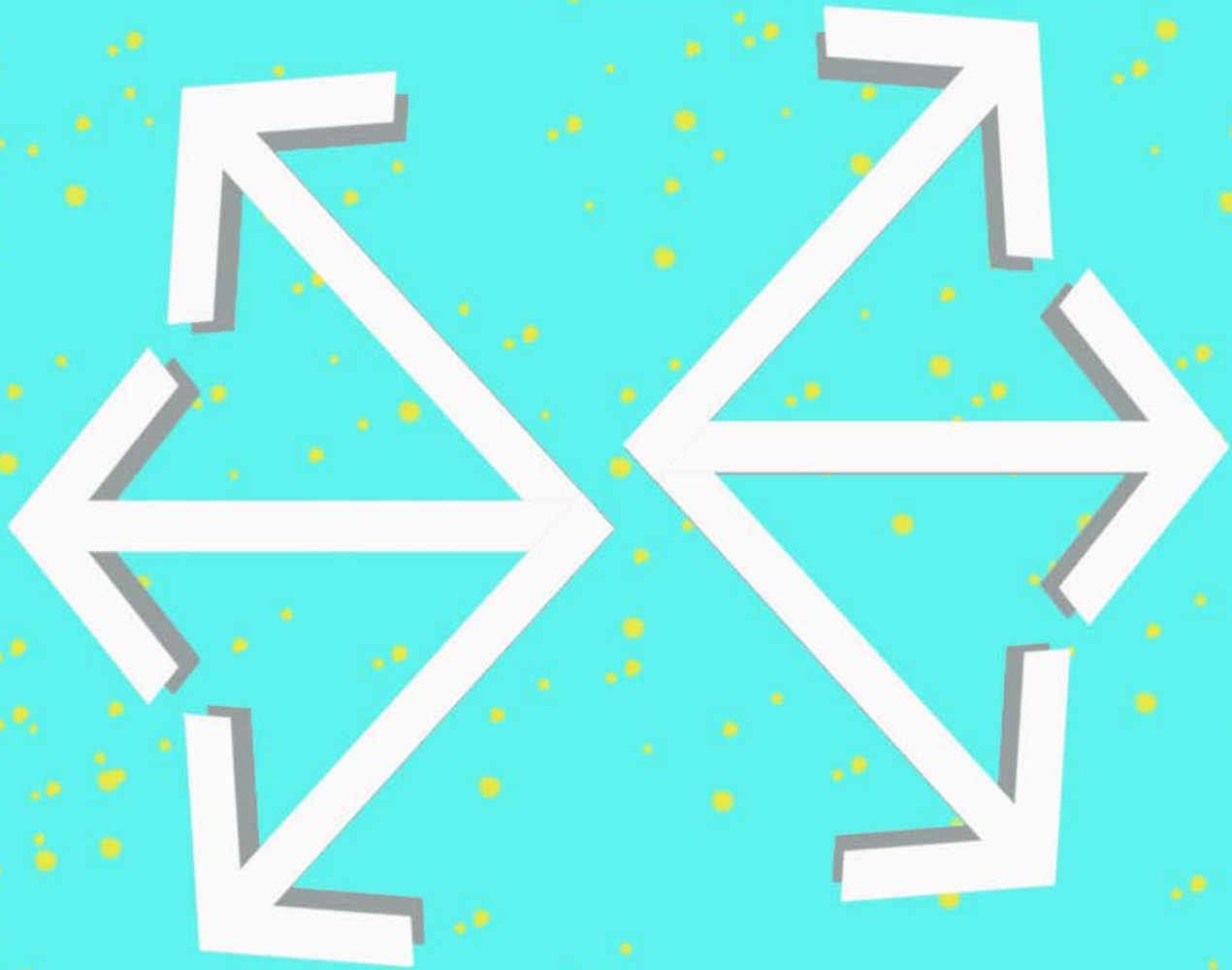


HOW TO DECIDE WHAT TO DO

a philosophy talk by

CLAIRE KIRWIN

Clemson University



What are you up to when you are trying to decide, on some occasion, what to do? In this talk, I shall argue that what you are doing is looking outwards, towards the world conceived as a place suffused with real value, and it is this value that you seek to be guided by in making your decision. This means that—whatever your official position on the metaethical question concerning the reality (or otherwise) of value—in the moment of deliberation, at least, you are already a metaethical realist.

FRIDAY, 9/10/21 - 3:30PM - CLOSE-HIPP 201